

# LED RHYTHM

LED  
PRECISE, HIGH-OUTPUT LIGHTING

## Slim III

### LED FLOOD LIGHTING

100W, 200W, 300W, 400W

- Intelligent control
- Operating Temp : -30°C to + 40 °C
- 0/1-10V Dimming Optional
- Expected Life over 50,000 Hours
- High-strength extruded aluminum alloy housing
- Famous brand drivers and chips



#### POWER

Available in 100W, 200W,  
300W, 400W Configurations

#### PRECISION

High Chip Density for  
Increased Uniformity

#### ENGINEERING

Die Cast Aluminum

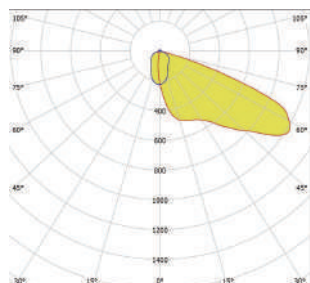
### ORDERING INFORMATION

SERIES	WATTS	CCT	OPTICS	INPUT PWR	Protection	Housing Material	DIMMING	FIELDS APPLICATION
Slim III	100W	3000K	40°70	120-277V	IP66	Die Cast Aluminum	0-10V Dimmable	Industrial Halls Cold storage Parking lot Stadium
	200W	4000K	50°40	277-480VAC				
	300W	5000K	30°40					
	400W	5700K	TYPE III					

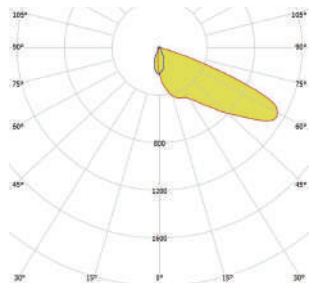
#### NOTES

- 70 CRI Standard
- Custom RAL Colors Require Additional Costs & Lead Times
- UL, FL & DL Options not DLC QPL Listed
- CM Mounting Standard

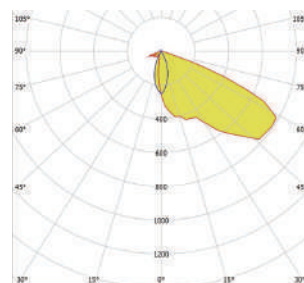
### Distribution Types



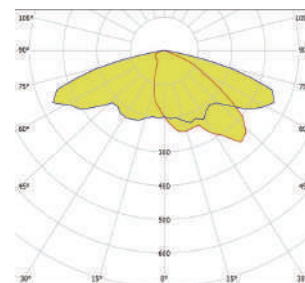
40°70



50°40



30°40



TYPE III

Due to continuous improvement and innovation, product appearance and specifications may change without notice. Actual performance may differ as a result of end-user environment and application.

# Slim III

## LED FLOOD LIGHTING

### SPECIFICATIONS

**Expected Life** | Over 50,000 hrs.

**Rating** | IP66

**Color Rendering Index (CRI)** | >70

**Operating Temp** | -30°C – +45°C

**Relative Humidity** | 0-90% RH  
**Power Factor** | ≥95%

**Input Voltage** | 120-277/277-480 VAC

**Input Frequency** | 50/60 Hz

**LED Chips** | osram

**Driver** | 0/1-10V Optional

**LED Efficiency**

- 3000K, 120 lm/w

- 4000K, 130 lm/w

- 5000K, 130 lm/w

- 6500K, 130 lm/w

**Surge Protector** | 10kv

### WARRANTIES

SEE WEBSITE FOR DETAILS

**5-Year**

### MATERIALS

**Housing** | Die Cast Aluminum

ADC12

**Gasketing** | Neoprene Rubber

**Hardware** | 18-8 Stainless Steel

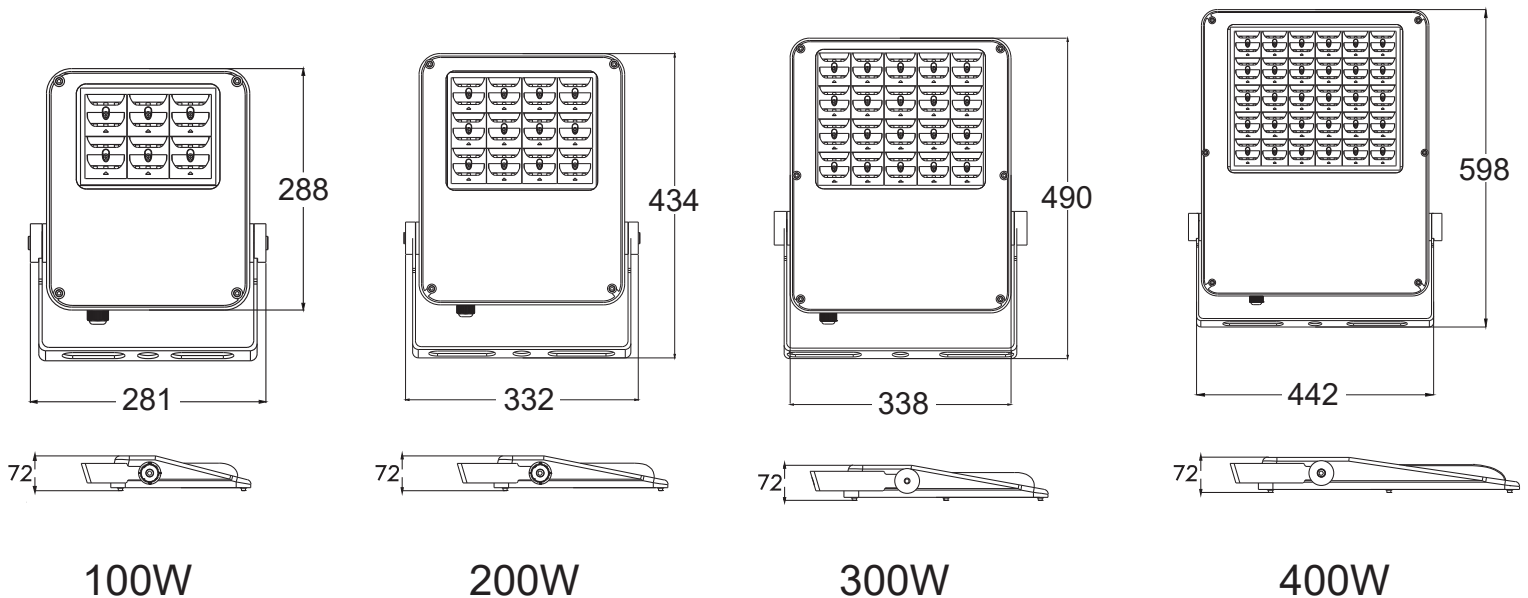
**Finish** | Protective UV Stabilized Powder Coated

4000 Hour Salt Spray Tested to ASTM B117

### LUMEN CHART

	3000K	4000K	5000K	5700K
100W	12000lm	13000lm	13000lm	12000lm
200W	24000lm	26000lm	26000lm	24000lm
300W	36000lm	39000lm	36000lm	39000lm
400W	48000lm	52000lm	48000lm	52000lm

### PRODUCT SIZE



Due to continuous improvement and innovation, product appearance and specifications may change without notice. Actual performance may differ as a result of end-user environment and application.

EMAIL: [service@ledrhythm.com](mailto:service@ledrhythm.com) | © 2021 LEDRHYTHM

[www.ledrhythm.com](http://www.ledrhythm.com)