

Lighting installation and maintenance

Cloud I



To users: Thank you for purchasing our products.
Be sure to keep this instruction manual

Please read this manual carefully before operation

This manual cannot provide all the details about the lighting fixtures or possible differences with the actual product, as well as all possible unexpected situations related to installation, use and maintenance. For more details or if special problems other than those listed in this manual occur, please contact our company.

! WARNING

Beware of electric shock/beware of burns/install correctly

- Please install strictly according to the instructions.
Improper installation may cause accidents such as falling, electric shock, fire, etc.
- Please do not modify the lamps or replace parts at will.
Avoid accidents such as lamps falling, electric shock, fire, etc.
- To ensure safety, be sure to connect the ground wire before connecting the power cord.
- Do not use in places where corrosive gas and oil pollution may occur.
Avoid accidents such as falling, electric shock, fire, etc.

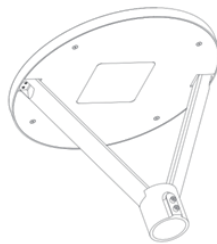
Precautions before wiring



Electrical parameter requirements
Please be sure to connect to the mains power supply that complies with the requirements of the lamp parameter label



Grounding requirements:
This lamp needs to be grounded. Please ground it reliably according to the standards of the country where it is located



- Please install strictly according to the instructions. Improper installation may cause accidents such as falling, electric shock, fire, etc.
- Please do not modify the lamps or replace parts at will. Avoid accidents such as lamps falling, electric shock, fire, etc.
- To ensure safety, be sure to connect the ground wire before connecting the power cord.
- The power supply used should not exceed the rated value (rated voltage 220 V ~, frequency 50 Hz).
Prolonged use at voltages exceeding the rated voltage may cause the lamp to overheat and cause a fire.
- To ensure safety, please entrust electrical professionals to repair and inspect lamps. Non-professionals may cause danger.
- If any abnormal phenomenon occurs in the lamp, please cut off the power supply immediately and contact the manufacturer.

Specifications :

model	Input voltage	Luminous flux	power	Power Factor
Cloud I_ 2 0	120-277 V AC ~ 50 / 60 Hz	240 0lm	20W	0.95
Cloud I_ 3 0	120-277 V AC ~ 50 / 60 Hz	360 0 lm	3 0 W	0.95
Cloud I_ 4 0	120-277 V AC ~ 50 / 60 Hz	480 0 lm	4 0 W	0.95
Cloud I_ 5 0	120-277 V AC ~ 50 / 60 Hz	600 0lm	5 0 W	0.95
Cloud I_ 6 0	120-277 V AC ~ 50 / 60 Hz	720 0 lm	6 0 W	0.95
Cloud I_ 8 0	120-277 V AC ~ 50 / 60 Hz	960 0 lm	8 0 W	0.9 5
Cloud I_ 10 0	120-277 V AC ~ 50 / 60 Hz	1200 0lm	10 0 W	0.9 5



WARNING, ELECTRIC SHOCK HAZARD

Lighting installation and maintenance

Cloud I

Installation method :

1. Fix the bracket and sleeve of the garden light;

● Open the package, take out the bracket and sleeve of the lamp body, remove the screws on the sleeve, and use them to fix the bracket and sleeve into a V shape (as shown in Figure 1), pass the wire from the bracket to the sleeve and lead it out (as shown in Figure 2), remove the screws on the lamp body, and use them to fix the V-shaped frame and the lamp body (as shown in Figure 3).

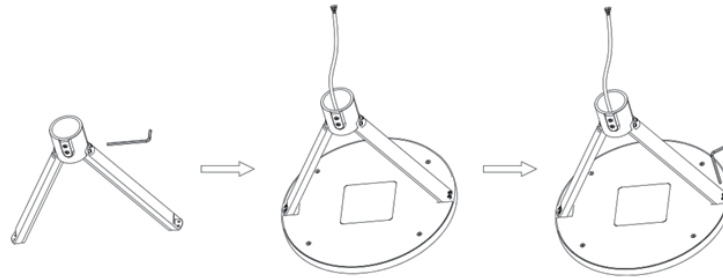


Figure 1. Figure 2. Figure 3

2. LED garden light wiring

※ Since the lamp is heavy, it is recommended that two people install it.

● Connect the wires in the lamp pole to the input wires of the LED garden light, and pay attention to the one-to-one correspondence between "L", "N", "G ND ", "DA + /Dim+", and "DA - /Dim-". See Figure 4.

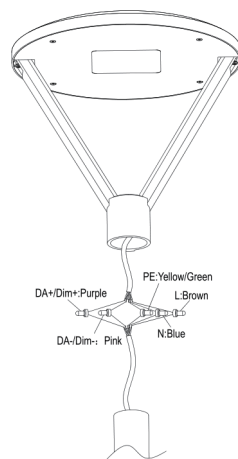


Figure 4. LED garden light wiring

3. Install LED garden lights on light poles

※ Since the lamp is heavy, it is recommended that two people install it.

● Insert the connected wires into the light pole, then put the LED garden light onto the light pole until the top of the light pole reaches the bottom of the mounting base, and use an Allen wrench to tighten the mounting base.

Tighten the fixing screws and nuts on the seat, as shown in Figure 5 and Figure 6.

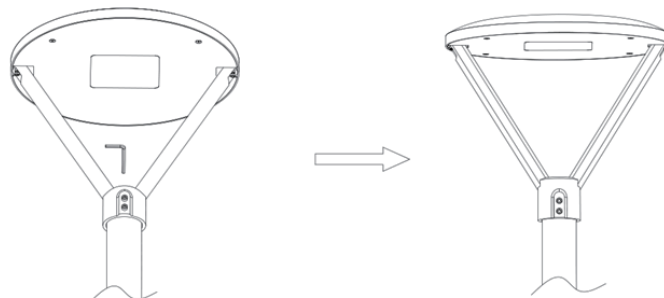


Figure 5. Installing LED garden lights on light poles Figure 6. LED garden lights installed